

\$7,087,800 - 0000 Fm 710, Louise

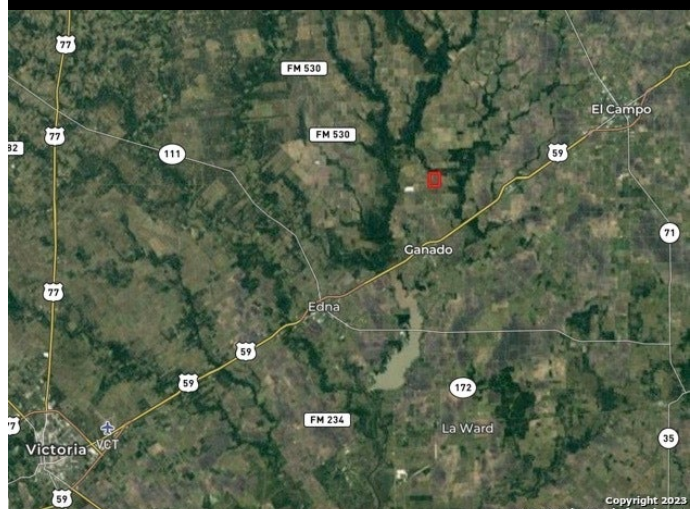
MLS® #1695348

\$7,087,800

Bedroom, Bathroom,
Commercial on 0.00 Acres

N/A, Louise, TX

Title: Established 472.52 acre Solar Farm for Sale in Jackson County, Texas | Long-Term Lease through 2051 Description: Explore a thriving renewable energy investment in Jackson County, Texas-a 472.52acre solar farm that is already operational, generating clean and sustainable energy. With an established setup of solar panels, this turnkey property ensures an immediate revenue stream. Take advantage of the secure lease agreement in place through 2051, featuring lease rates subject to annual cost of living increases. Don't miss this golden opportunity for long-term returns in the green energy sector. Property Details: Location: Jackson County, Texas Land Area: 472.52acres Lease Term: through 2051 Lease Rate (per acre): Year 2024: \$597.24 Year 2051: \$1,019.42 Lease rate subject to cost of living increase Key Features: Established Solar Farm: Operational solar panels in place, generating renewable energy. Immediate Revenue Stream: Benefit from the current production of clean energy, ensuring instant returns. Long-Term Lease: Secure investment with a lease agreement in place through 2051. Increasing Revenue Potential: Annual lease rate escalation tied to the cost of living, ensuring growing returns over time. Location Highlights: Jackson County, Texas: A vibrant community supporting renewable energy initiatives. Convenient Access: Well-connected to major transportation routes and nearby cities, offering logistical



advantages. Investment Information: Seize this exceptional investment opportunity in the renewable energy sector. With an established solar farm already generating clean energy, a long-term lease through 2051, and lease rates subject to escalation, this 678-acre property promises substantial and sustainable income growth. Call today for further details, investment inquiries, or to schedule a site visit. Join the green energy revolution now!

Built in 2022

Essential Information

MLS® #	1695348
Price	\$7,087,800
Acres	0.00
Year Built	2022
Type	Commercial
Sub-Type	Other: Motel/Hotel/MH Prk
Status	Active

Community Information

Address	0000 Fm 710
Area	3100
Subdivision	N/A
City	Louise
County	Jackson
State	TX
Zip Code	77455

Amenities

Utilities	Electricity, Water
-----------	--------------------

Interior

# of Stories	0.0
--------------	-----

Exterior

Construction	Other
--------------	-------

School Information

District Edna Independent School District

Additional Information

Date Listed June 12th, 2023
Days on Market 341
Zoning SOLAR FARM

Listing Details

Listing Office UC 1836 Realty Group

The data relating to real estate on this web site comes in part from the Internet Data Exchange program of the MLS of the San Antonio Board of Realtors®, and is updated as of May 18th, 2024 at 9:36pm CDT (date/time). IDX information is provided exclusively for consumers' personal, non-commercial use and may not be used for any purpose other than to identify prospective properties consumers may be interested in purchasing.