

\$165,000 - Castle HI, New Braunfels

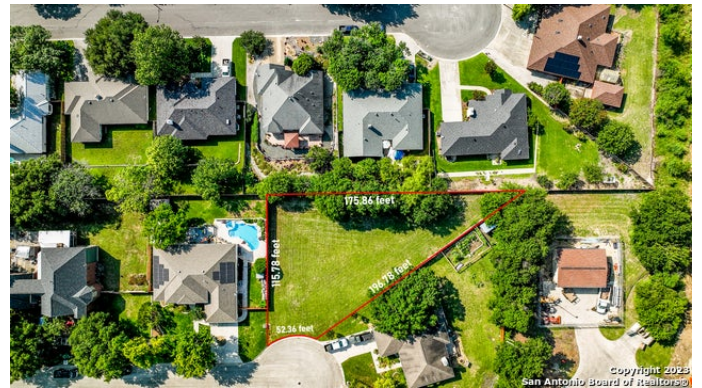
MLS® #1693257

\$165,000

Bedroom, Bathroom,
Land on 0.41 Acres

PALACE HEIGHTS, New Braunfels, TX

Welcome to this charming property description for a level lot in New Braunfels, nestled within an established neighborhood and adorned with beautiful pecan trees. This inviting piece of land offers the perfect canvas for your dream home, complete with the convenience of a location just minutes away from various amenities. Situated in a tranquil neighborhood, this level lot provides an ideal setting for creating your own personal oasis. The property boasts a generous expanse, allowing ample space for constructing a comfortable residence while leaving room for outdoor activities and landscaping. The presence of magnificent pecan trees enhances the natural beauty of the surroundings, providing shade, privacy, and a touch of serenity. One of the most appealing aspects of this property is its location. With the bustling downtown area a mere 5 minutes away, you can easily indulge in the vibrant culture, restaurants, and entertainment options that New Braunfels has to offer. Additionally, the famous Gruene district, known for its historic charm and lively atmosphere, is just a quick 7-minute drive from your future home. For those who travel frequently, the convenience of being only 35 minutes from the San Antonio International Airport is a major plus. Whether for business or pleasure, the ease of access to air travel adds a layer of convenience to your lifestyle. Another notable feature of this property is the absence of a homeowners association. This means you have the freedom



to customize your home and outdoor space without the restrictions commonly associated with such associations. Enjoy the flexibility to design your residence according to your personal taste and preferences, making it truly your own. In summary, this level lot in New Braunfels presents a rare opportunity to build your ideal home in an established neighborhood, complete with the beauty of mature pecan trees. Its prime location ensures easy access to downtown New Braunfels, the charming Gruene district, and the San Antonio International Airport. The absence of a homeowners association allows you the freedom to create a personalized living space that perfectly suits your lifestyle. Don't miss out on this chance to make your dreams a reality in this delightful corner of Texas.

Essential Information

MLS® #	1693257
Price	\$165,000
Acres	0.41
Type	Land
Sub-Type	Residential Lot
Status	Active

Community Information

Address	Castle HI
Area	2707
Subdivision	PALACE HEIGHTS
City	New Braunfels
County	Comal
State	TX
Zip Code	78130

Amenities

Amenities	Other - See Remarks, Street Gutters
Utilities	Cable TV, Electric, Telephone, Water System

Exterior

Lot Description Improved

School Information

District New Braunfels
Elementary Memorial
Middle New Braunfel
High New Braunfel

Additional Information

Date Listed June 5th, 2023
Days on Market 345
Zoning R-2

Listing Details

Listing Office San Antonio Portfolio KW RE AH

The data relating to real estate on this web site comes in part from the Internet Data Exchange program of the MLS of the San Antonio Board of Realtors®, and is updated as of May 18th, 2024 at 7:36pm CDT (date/time). IDX information is provided exclusively for consumers' personal, non-commercial use and may not be used for any purpose other than to identify prospective properties consumers may be interested in purchasing.