

\$4,841,694 - Lot 1r County Road 607, Farmersville

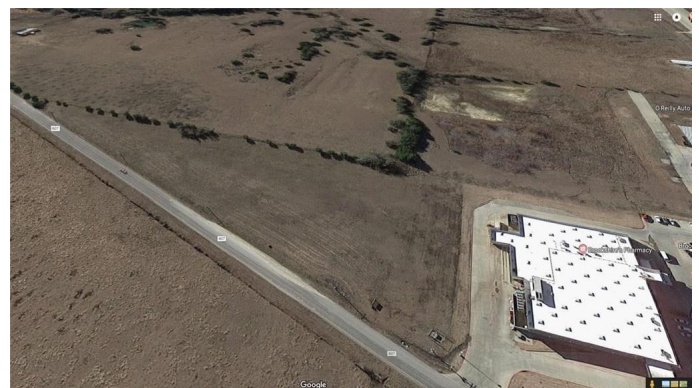
MLS® #20142144

\$4,841,694

0 Bedroom, 0.00 Bathroom,
Land on 3.71 Acres

Farmersville Market Center, Farmersville, TX

COMMERCIAL LOT JUST OFF HWY 380
READY FOR DEVELOPMENT IN THE
HEART OF THE HIGHLY SOUGHT-AFTER
380 CORRIDOR! Great pad site- 970' ROAD
FRONTAGE on CR 607. Directly behind
Brookshire's with access to 380. Neighboring
businesses include: O'Reilly Auto Parts,
Harvest Dental, Farmers Food & Fuel Station
(Shell), Lexington Medical Lodge, Brookshire's
Grocery, Mendoza's Tire Shop & Murphy's
Crossing Business Park. 1000' from the Collin
College Farmersville Campus . Superb
location for mixed-use such as commercial,
entertainment, office, retail, restaurants, and
even motels. Zoned HWY Commercial. City
water & sewer on-site.

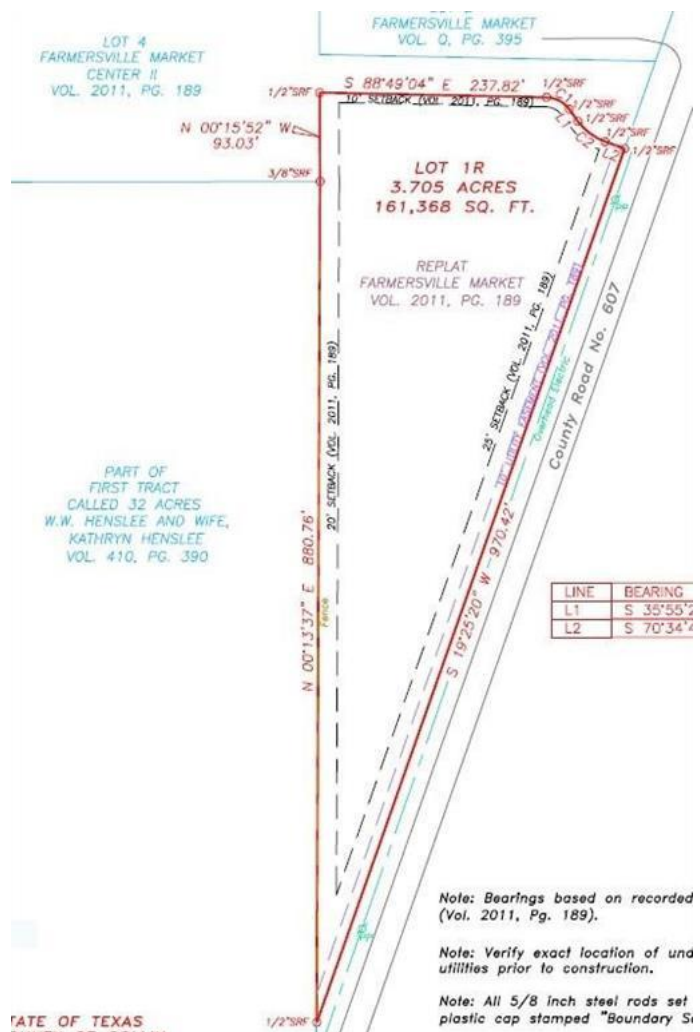


Essential Information

MLS® #	20142144
Price	\$4,841,694
Bathrooms	0.00
Acres	3.71
Type	Land
Sub-Type	Unimproved Land
Status	Active

Community Information

Address	Lot 1r County Road 607
Subdivision	Farmersville Market Center
City	Farmersville



County	Collin
State	TX
Zip Code	75442

Amenities

Utilities	City Sewer, City Water, Concrete, Electricity Available, Natural Gas Available, Phone Available, Sewer Available
-----------	--

Exterior

Lot Description	Interior Lot, Level
-----------------	---------------------

School Information

District	Farmersville ISD
Elementary	Tatum
High	Farmersvil

Additional Information

Zoning	Office,Other,Retail
--------	---------------------

Listing Details

Listing Agent	Mark Moss
Listing Office	Diversified Realty Consultants

Users may not reproduce or redistribute the data found on this site. The data is for viewing purposes only. Data is deemed reliable, but is not guaranteed accurate by the MLS or NTREIS.
Listing information last updated on May 15th, 2024 at 7:01pm CDT