

\$30,000 - 4708 Sandman, Shreveport

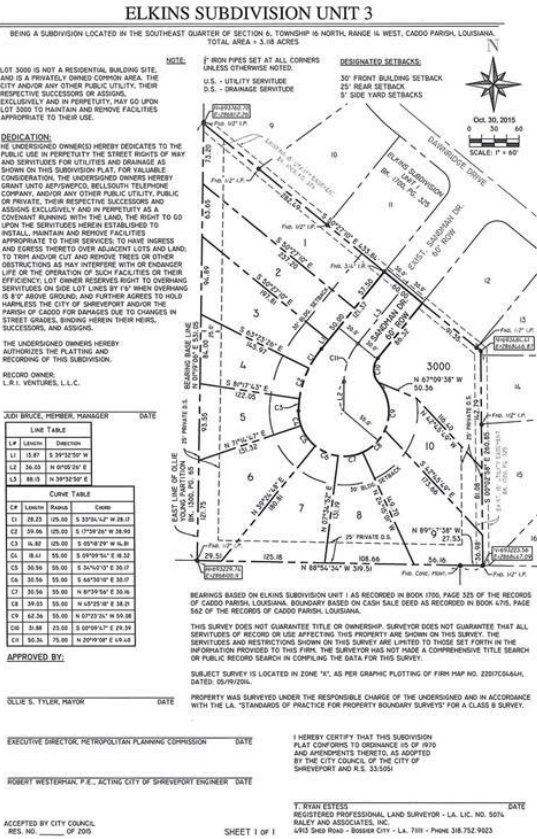
MLS® #14676903

\$30,000

0 Bedroom, 0.00 Bathroom,
Land on 0.21 Acres

Elkins, Shreveport, LA

Lot #2. Level city lot with all city utilities and natural gas on site. Ready for your new home construction by builder of your choice. Minimum 1400 sq ft. HOA covenants and resepriptions apply to roof pitch and size. Homes required to have gas water heater, gas stove and gas furnace. HOA dues \$250 per year for common area maintenance. Owner is licensed real estate agent.



Essential Information

MLS® #	14676903
Price	\$30,000
Bathrooms	0.00
Acres	0.21
Type	Land
Sub-Type	Unimproved Land
Status	Active

Community Information

Address	4708 Sandman
Subdivision	Elkins
City	Shreveport
County	Caddo
State	LA
Zip Code	71118

Amenities

Utilities	City Sewer, City Water, Electricity Available, Natural Gas Available, Cable Available
-----------	---

Exterior

Lot Description Cul-De-Sac

School Information

District Caddo PSB
Elementary Caddo ISD Schools
Middle Caddo ISD Schools
High Caddo ISD Schools

Additional Information

Zoning Residential

Listing Details

Listing Agent Judith Bruce
Listing Office Louisiana Realty & Assoc LLC

Users may not reproduce or redistribute the data found on this site. The data is for viewing purposes only. Data is deemed reliable, but is not guaranteed accurate by the MLS or NTREIS.
Listing information last updated on May 16th, 2024 at 5:45am CDT